



**FOUNDING MEMBERS**

- Suzanne Baker
- Karen Beal
- Stephen Bronte
- Hedi Burkhart
- Cabona's, Inc.
- Treon & Chad Christine
- Greg Dorland
- Valerie & Reb Forté
- Barbara & Leon Futran
- Chiara & Ron Gajar
- Granite Chief Communications
- Granite Peak Management
- Hazel & Ray Guaraglia
- Joe Hasulak
- Headwall Corporation
- Patricia Heck
- Laura & Ed Heneveld
- Fred Ilfeld
- Vicki & Roger Kahn
- Molly & Dan Kenney
- Nicola Kerslake
- Rick Lamb
- Jean Lange
- Vikki & Larry Lawrence
- Rick Lierman
- Connie & Robert Loarie
- Jean Ann Luckhardt
- Vance Lura
- Sandra & Bernie Magnussen
- Theresa Martin
- John Moberly
- Walter Nelson
- Olympic Plaza Food & Beverage Co.
- PlumpJack Squaw Valley Inn
- Patricia & Russell Poulsen
- Sandy Poulsen
- Resort at Squaw Creek
- Pam Rocca
- Maria Ross
- Squaw Valley Chapel
- Squaw Valley Plumbing
- Squaw Valley Ski Corporation
- Squaw Village Neighbourhood Co.
- Village at Squaw Valley USA
- MaryEllen & Keith Vogt
- David Welch
- Barbara & John Wilcox

**DIRECTORS AND OFFICERS**

- John Wilcox, President
- Karen Beal, Vice President
- Peter Bansen, Secretary/Treasurer
- John Moberly
- Russell Poulsen

**THE SIERRA NEVADA:  
Will they remain  
snow-capped peaks?**

Two scientists addressed this question in another presentation of the Speakers Forum series developed by Squaw Valley Institute and co-sponsored by Resort at Squaw Creek. Dr. Dan Cayan and Dr. Kelly Redmond spoke to an attentive audience at the Resort on May 5, 2003.

The speakers explained that there are good reasons to be concerned about the long-range future of our snow pack. They advised that current predictions are that the average temperature in central California will be between 4 and 10 degrees Fahrenheit warmer by the end of this century than the present average temperature. A warming of 5 degrees F. would reduce the water stored in the California snow pack to half of current levels in spring when snow accumulation is usually at its maximum values. This would have huge implications to water resources in the future.

Many kinds of warming evidence were cited, including different types of data collected over many years. Over the Western U.S., including our area, signs of spring now are 5 days to 3 weeks earlier than they appeared 50 to 60 years ago. Historical stream flow records in rivers fed by snow melt are one kind of indicator—for example, the fraction of the annual runoff that occurs during the peak snow runoff season, April through July, has decreased from 45% then to about 35% now.

Another kind of indicator are records of when lilac bushes bloom; these records show that blooming occurs several days earlier today than it did 50 years ago. The speakers attributed part of the observed warming to natural variability of the California climate, but also opined that part of the warming is likely due to man's activities. Burning of



Dr. Dan Cayan, Scripps Institution of Oceanography - La Jolla, California

fossil fuels and the resulting build-up of "greenhouse gases", such as carbon dioxide in the atmosphere, appears to be one of the primary causes of this warming. These gases trap some of the heat radiated from the earth's surface and, like a blanket, makes the earth warmer than it would otherwise be.

There are a number of weather stations nearby recording data and more are needed in our region. Local stations are presently

*continued on page 2*

**IN THIS ISSUE...**

- 1 *Climatology Speakers Forum Summary*
- 2 *What is Squaw Valley Institute; Membership Information*
- 2 *Institute Adopts Mission and Vision Statements*
- 3 *Tahoe's Environmental Politics*
- 4 *Institute Program Schedule*
- 4 *Other Events in Squaw Valley*

## WHAT IS SQUAW VALLEY INSTITUTE? How to become a member!

Founded in 2002, Squaw Valley Institute is an organization of residents and businesses dedicated to presenting events having artistic, cultural and educational values. In our first year, we successfully conducted eight different events.

The Institute is a non-profit corporation under Section 501(c)(3), and all contributions and membership dues are tax deductible for the donors.

Initial funding for the establishment of the Institute has been provided by a generous grant from the North Lake Tahoe Resort Association.

Additional funding has been received from individuals, organizations and businesses that have become Founding Members or Regular Members.

Becoming a member shows your support for the Institute, its vision and programs. Founding memberships are no longer available after the end of 2002, but regular memberships are available for \$25 per person, \$40 per family, \$25 per non-profit organization and \$100 per business. Members receive our newsletters and discounts to some paid events. To become a member, contact us at the website or phone number listed below.

Board meetings are open to the public and are usually held on the last Tuesday

of each month at the Fire Station Meeting Room from 3:00 to 5:00 pm. We welcome volunteers to participate on various committees and events.

Call (530) 581-4138 or go to [www.squawvalleyinstitute.org](http://www.squawvalleyinstitute.org) for more information. **Think about getting involved!**

## INSTITUTE ADOPTS NEW VISION & MISSION STATEMENTS

After a year of experience and several study sessions, the Board of Directors crafted and approved new vision and mission statements at their April 29, 2003 Board Meeting:

### Vision Statement

Squaw Valley Institute enhances the quality of life within the unique environment of the Sierra Nevada for present and future generations.

### Mission Statement

Squaw Valley Institute offers programs and activities:

- Having artistic, cultural, educational and entertainment value
- Bringing together visitors, residents and friends
- Fostering a sense of community

The Board also adopted a motto: "To Enlighten and Entertain".

## SNOW CAPPED PEAKS, cont'd



Dr. Kelly Redmond, Desert Research Institute - University of Nevada, Reno.

operating in Squaw Valley, Tahoe City, Ward Creek, Donner Summit and North Tahoe High School. This data can be viewed on various websites, including [www.wrcc.dri.edu/weather/index.html](http://www.wrcc.dri.edu/weather/index.html) (local sites), [www.wrcc.dri.edu/cgi-bin/snoX\\_graph.pl](http://www.wrcc.dri.edu/cgi-bin/snoX_graph.pl) (snotel), [www.wrh.noaa.gov/reno/remodtdata/index.shtml](http://www.wrh.noaa.gov/reno/remodtdata/index.shtml) (NWS sites) and <http://meteora.ucsd.edu/cap>.

After the presentation, the audience addressed a number of questions to the speakers about many aspects of their talk and the potential problems of climate change.

Our speakers were Dr. Dan Cayan, Director of the Climate Research Division at Scripps Institution of Oceanography in La Jolla, and Dr. Kelly Redmond, Associate Director of the Western Regional Climate Center at Desert Research Institute in Reno.

---

### MEMBERSHIP ORDER FORM

Name(s): \_\_\_\_\_

Individual \$25

Mailing Address: \_\_\_\_\_

Family \$40

City/State/Zip: \_\_\_\_\_ E-Mail \_\_\_\_\_

Non-profit \$25

[ ] Visa [ ] Mastercard [ ] Amex [ ] Check Total Amount: \$ \_\_\_\_\_

Business \$100

Card No: \_\_\_\_\_ Exp. Date: \_\_\_\_/\_\_\_\_/\_\_\_\_

Please mail this form with your check or credit card info for the appropriate amount to:

**SQUAW VALLEY INSTITUTE**  
P.O. Box 3325, Olympic Valley, CA 96146  
[www.squawvalleyinstitute.org](http://www.squawvalleyinstitute.org)



## TAHOE'S ENVIRONMENTAL POLITICS

A diverse panel of experienced speakers addressed an enthusiastic audience of locals on March 13, 2003 about what is happening with the political side of environmental concerns and issues in the Lake Tahoe Basin.



Moderator Leo Poppoff - Tahoe World columnist and retired NASA scientist

Much of the presentation revolved around the Lake Tahoe Environmental Improvement Program that was developed after President Clinton's visit in 1997. A total of 980 million dollars of expenditures was earmarked to be spent by federal, state and local governments over a 10-year period. The Lake Tahoe Transportation and Water Quality Coalition has helped reconcile the widely varying opinions and agendas of the many public, private and environmental entities participating in decisions involving the future of the Tahoe Basin, and has contributed much to attracting federal and state support. The areas where the most agreement and progress has occurred thus far are transportation, water quality and land conservation.



Rochelle Nason makes a point as Dr. Mark Nechodom looks on



California State Senator Debra Bowen

After the panelists completed their presentation, a lengthy and wide-ranging question and answer session took place.

There isn't space here to provide a comprehensive summary of all that was said, but here are a very few sample nuggets from the evening:

- Only 6 to 9 percent of the people who live in the Lake Tahoe Basin vote here!
- What is happening with regulation and development within the Basin is also having increasing affects on some of the areas outside the Basin but near the periphery.
- 85% of the present economy is based on tourism and recreation.



Steve Teshara - Executive Director, North Lake Tahoe Resort Association

- Incline Village may start an incorporation procedure soon in order to escape from governance by Washoe County. This will be closely watched and perhaps followed by a move to incorporate the North and West Shores, possibly including Squaw Valley and Alpine Meadows.
- The lack of affordable housing is being well addressed at the South Shore, but

steps are only just beginning at the North Shore.

The panel was organized and moderated by Leo Poppoff, a columnist for the Tahoe World and a retired Atmospheric Scientist for NASA. The panel members were:

**Debra Bowen**, California State Senator

**Rochelle Nason**, Executive Director - League to Save Lake Tahoe

**Dr. Mark Nechodom**, Chief Social Scientist - Sierra Nevada Research Center

**Steve Teshara**, Executive Director - North Lake Tahoe Resort Association

The program was co-sponsored by Resort at Squaw Creek who generously donated facilities and services for the event. We sincerely appreciate their continued support of Squaw Valley Institute.

## VOLUNTEERS NEEDED

Want to get involved, make new friends, learn a new skill, contribute to your community, and improve your self-esteem? All of these benefits accrue to our volunteers.

Squaw Valley Institute is operated entirely without paid staff - volunteers do all of the work. As we grow, we will need more volunteers for a variety of activities.

Volunteers are needed now to serve on the Program Committee. This committee will help develop programs and events and make recommendations to the board on what programs and events to undertake. Volunteers are also needed to help put on selected events and to help with marketing and publicity.

To learn more about volunteer opportunities or to join our growing corps of volunteers, call (530) 581-4138 or inquire by e-mail to: [info@squawvalleyinstitute.org](mailto:info@squawvalleyinstitute.org). We would love to hear from you.



## NEW PROGRAMS SCHEDULED!

The Institute has scheduled a variety of interesting programs for the second half of 2003. Here are brief summaries. *Mark your calendars!*

**August 16:** *Bear Fair* in the new Village at Squaw Valley USA. This event is co-sponsored by the Village and the Institute and will benefit The Bear League. A variety of fun activities will be held including a 5K fun run, local artists, an expert from Department of Fish & Game, music, and more!

**August 20:** *"Paradise and Hell Holes - Places I Have Lived as an American Diplomat"* a Speakers Forum featuring Genta Hawkins Holmes, former U.S. Ambassador to Australia and Namibia and holder of several important positions in the U.S. Department of State. Ambassador Holmes will describe how our embassies and diplomats work, and tell us of some interesting experiences she has had in her career. Ambassador Holmes will also comment on the image of the United States in the world today

and how it relates to terrorism. Free admission at PlumpJack Conference Center, no-host bar opens 6:30 pm and presentation starts at 7:30 pm.

**October 25:** *Squaw Valley Treasure Hunt*, a forty-year tradition that briefly lapsed is being revived and reinvigorated by the Institute. A potluck dinner party is followed by teams of participants scouring the valley using clever clues to find hidden treasures. 5:30 pm at Plaza Bar, Olympic House Lodge. Watch for more details to be published soon.

**November 1:** *Squaw Valley Institute's First Annual K.T. ("Katie") Awards!* As KT-22 mountain captures the spirit and identity of Squaw Valley, the annual K.T. awards will be presented to those businesses and individuals who have made significant contributions to the image, spirit and quality of life in Squaw Valley. A celebration party, dinner and dynamite awards ceremony will be held at Resort at Squaw Creek, starting 6:30 pm. There will be celebrity skiers and guest stars and opportunities to bid on skiing with famous skiers. This will be the start of a new tradition and attendance will be limited by ballroom capacity!

## OTHER EVENTS IN SQUAW VALLEY...

**Free Movie Nights:** In the Village, every Wednesday night, 5-7pm through July and August

**Free Music Series:** In the Village, every Thursday night, 5-7pm - July, August and September

**July 4-5:** Old West Weekend in the Village. 530/584-6268

**July 4-6:** Blues and Bluegrass Festival at High Camp. 530/583-6985

**July 5:** Fireworks show in Base Area

**July 11:** Free Concert, Great Basin Brass Quintet in the Village, 6 pm. 530/584-6268

**July 26-27:** Art, Wine and Music Festival in the Village and Base Area. 530/583-6985

**August 9-10:** Brews, Jazz and Funk Fest in the Village, 12-5 pm. 530/584-6268

**August 15:** Free Concert, Miro String Quartet in the Village at 6pm. 530/584-6268

**August 31:** Alpen Wine Fest supporting the Heuga Center, 2-5pm. 510/205-4285

**September 21:** Kim Angeles Gypsy Violin at the Squaw Valley Chapel, 7 pm. 530/584-4013

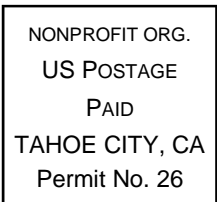


P.O. Box 3325

Olympic Valley, CA 96146

(530) 581-4138

[www.squawvalleyinstitute.org](http://www.squawvalleyinstitute.org)



BOXHOLDER